

Microsoft Technologies Documentation Resources

Microsoft Imagine Account Downloads Code Compete About Blog

By using this site you agree to the use of cookies for analytics, personalized content and ads. [Learn More](#)

## My School's WebStore

Find out if you can get more software through your school at no cost. Please enter your full school name to see if your school has a Microsoft Imagine subscription below. Example: "University of Washington" not "UW"

Noorderpoortcollege - Information  
Communication Technology  
Netherlands

Don't see your school?

Alles Engels!

Your school's WebStore requires a separate account created by your school administrator. For questions related to your school's WebStore or to request an account, go directly to that WebStore or click "Help" in the navigation bar for assistance.

[Search WebStore](#)

- \* VM Ware Workstation 12
- \* Windows 10 Pro (ENG)
- \* Window Server 2016 Datacenter(ENG)

[Studenten](#) [Faculteitsmedewerkers/onderwijzend personeel](#)

De gewenste pagina kunt u alleen bekijken nadat u zich hebt aangemeld.

## Aanmelden

**Gebruikersnaam\***

**Wachtwoord\***

[Gebruikersnaam of wachtwoord vergeten?](#)

## Registreren

Wilt u een account aanvragen of de registratie voltooid? Klik hieronder op de knop Registreren om door te gaan.

"Windows 10"

Windows 10 Education, Version 1703 (Updated March 2017) ▲



Windows 10 Education is only available for education customers in volume licensing programs. Windows 10 Education includes features from Windows 10 Enterprise that are ideal for advanced security, and the comprehensive device control and management needs of today's educational institution. Windows 10 Education also enables simplified deployment in the education space; this edition provides a direct path for many devices to upgrade from Windows 10 Home or Windows 10 Pro.

Windows 10 Education, Version 1703 (Updated Mar 2017) is the latest version of Windows 10 Education. It includes all updates released for Windows 10 Education since Version 1607 (Updated Nov 2016), including security and non-security updates.

Kies een taal:

Engels

Windows 10 Education, Version 1703 (Updated March 2017) 32/64-bit (English) - Microsoft Imagine

Beschikbaar voor...

Gratis

Toevoegen aan winkelwagen

Windows 10 Education, Version 1703 (Updated March 2017) 32/64-bit (English-United Kingdom) - Microsoft Imagine

Beschikbaar voor...

Gratis

Toevoegen aan winkelwagen

Windows 10 Education N, Version 1703 (Updated March 2017) ▼

Windows 10 (Multiple Editions), Version 1703 (Updated March 2017) ▼

Windows 10 N (Multiple Editions), Version 1703 (Updated March 2017) ▼

"Windows 10"

Windows 10 Education, Version 1703 (Updated March 2017) ▾

Windows 10 Education N, Version 1703 (Updated March 2017) ▾

Windows 10 (Multiple Editions), Version 1703 (Updated March 2017) ▾

Windows 10 N (Multiple Editions), Version 1703 (Updated March 2017) ▲



Windows 10 Pro is designed for small and medium businesses, enabling organizations to manage their devices and apps, protect their business data, facilitate remote and mobile scenarios, as well as take advantage of the cloud technologies for their organizations. In addition to small and medium businesses, Windows 10 Pro devices would be a good choice for organizations supporting Choose Your Own Device (CYOD) programs.

Windows 10 Pro N includes the same functionality as Windows 10 Pro, except that it does not include certain media related technologies (Windows Media Player, Camera, Music, Movies and TV), and does not include the Skype app.

Windows 10 Pro N, Version 1703 (Updated Mar 2017) is the latest version of Windows 10 Pro N. It includes all updates released for Windows 10 Pro N since Version 1607 (Updated Nov 2016), including security and non-security updates.

Kies een taal:

Engels

Windows 10 N (Multiple Editions), Version 1703 (Updated Mar 2017) 32/64-bit (English-United Kingdom) - Microsoft Imagine

Beschikbaar voor...

Gratis

Toevoegen aan winkelwagen

Windows 10 N (Multiple Editions), Version 1703 (Updated March 2017) 32/64-bit (English) - Microsoft Imagine

Beschikbaar voor...


Gratis


Toevoegen aan winkelwagen

"Windows 10"

Windows 10 Education, Version 1703 (Updated March 2017) ▾

Windows 10 Education N, Version 1703 (Updated March 2017) ▲



Microsoft 

Windows 10 Education is only available for education customers in volume licensing programs. Windows 10 Education includes features from Windows 10 Enterprise that are ideal for advanced security, and the comprehensive device control and management needs of today's educational institution. Windows 10 Education also enables simplified deployment in the education space; this edition provides a direct path for many devices to upgrade from Windows 10 Home or Windows 10 Pro.

Windows 10 Education N includes the same functionality as Windows 10 Education, except that it does not include certain media related technologies (Windows Media Player, Camera, Music, TV and Movies), and does not include the Skype app.

Windows 10 Education N, Version 1703 (Updated Mar 2017) is the latest version of Windows 10 Education N. It includes all updates released for Windows 10 Education N since Version 1607 (Updated Nov 2016), including security and non-security updates.

Kies een taal: Engels ▾

[Windows 10 Education N, Version 1703 \(Updated March 2017\) 32/64-bit \(English\) - Microsoft Imagine](#)

[Beschikbaar voor...](#)

Gratis

[Toevoegen aan winkelwagen](#)

[Windows 10 Education N, Version 1703 \(Updated March 2017\) 32/64-bit \(English-United Kingdom\) - Microsoft Imagine](#)

[Beschikbaar voor...](#)

Gratis

[Toevoegen aan winkelwagen](#)

The screenshot shows the Noorderpoort website interface. At the top left is the logo "Noorderpoort" with the tagline "Technologie & Ict". At the top right are navigation links for "Home", "Help", and "Nederlands", along with a user greeting "Hallo, tw.hilgersom@noorderpoort.nl" and a shopping cart icon. Below the navigation is a search bar with the placeholder text "Product zoeken" and a search icon. Underneath the search bar are two tabs: "Studenten" and "Faculteitsmedewerkers/onderwyzend personeel". A blue banner displays "Details (Bestelnummer: 100415031071)". Below this is another blue banner labeled "Downloads". The main content area shows a product listing for "Windows 10 Education 32/64-bit (English) - Microsoft Imagine - Downloaden". To the left of the text is a small thumbnail image of the Windows 10 logo. Below the product name is a green button labeled "Downloaden", which is circled in red. To the right of the product name, there is a "Productsleutel:" field with a redacted key and a link: "• [Burning the ISO/IMG file onto a disc](#)".

Taal selecteren:

Nederlands (Nederland)

## Bestellingoverzicht

**Bestelnummer:** 100415031071

**Besteldatum:** 2015-09-27

## Uw software downloaden

Hebt u hulp nodig?



### Windows 10 Education 32/64-bit (English)

Microsoft Imagine - Windows 10 Education 64-bit (English)

Downloaden

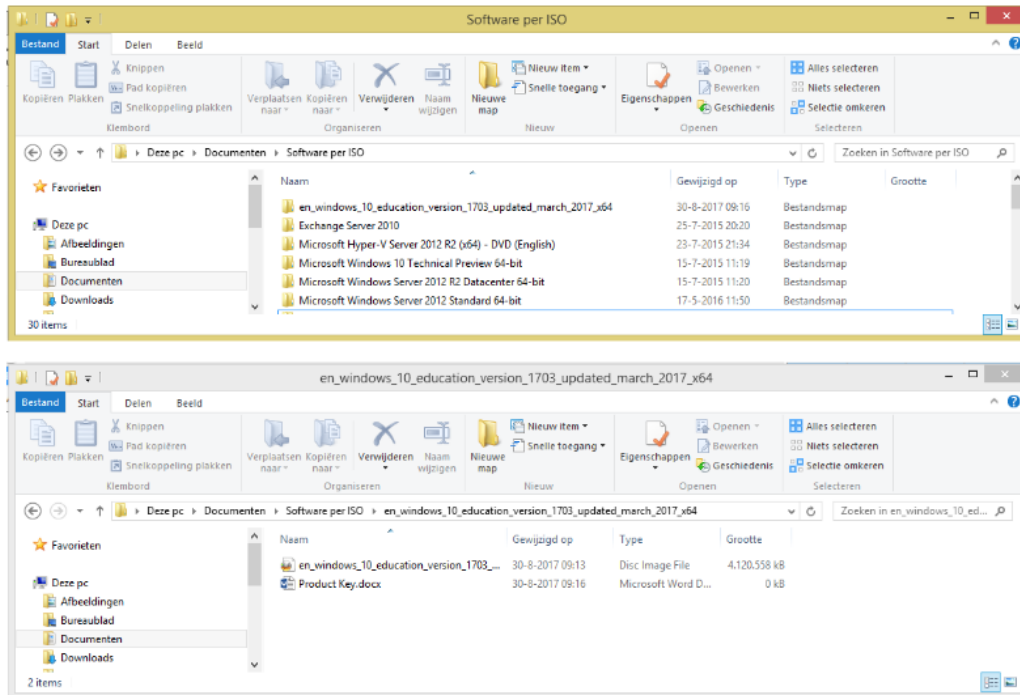
Grootte: 3 GB

Microsoft Imagine - Windows 10 Education 32-bit (English)

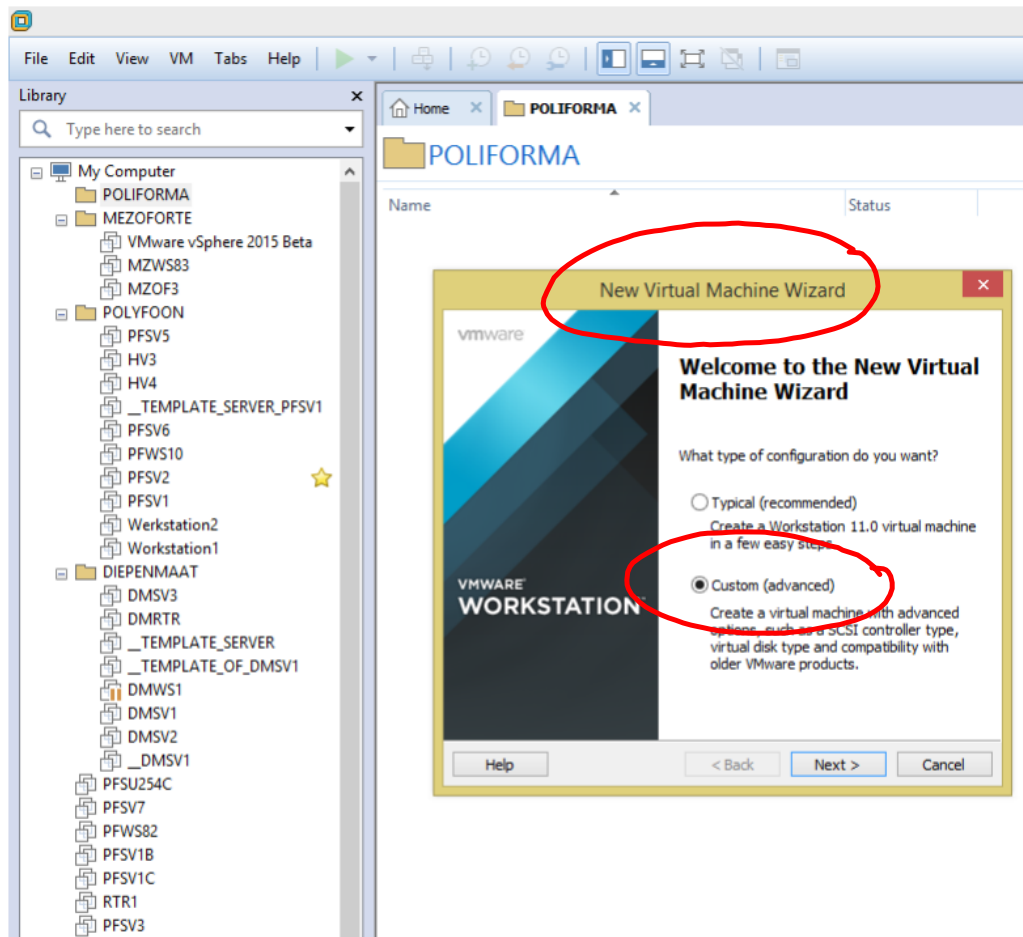
Downloaden

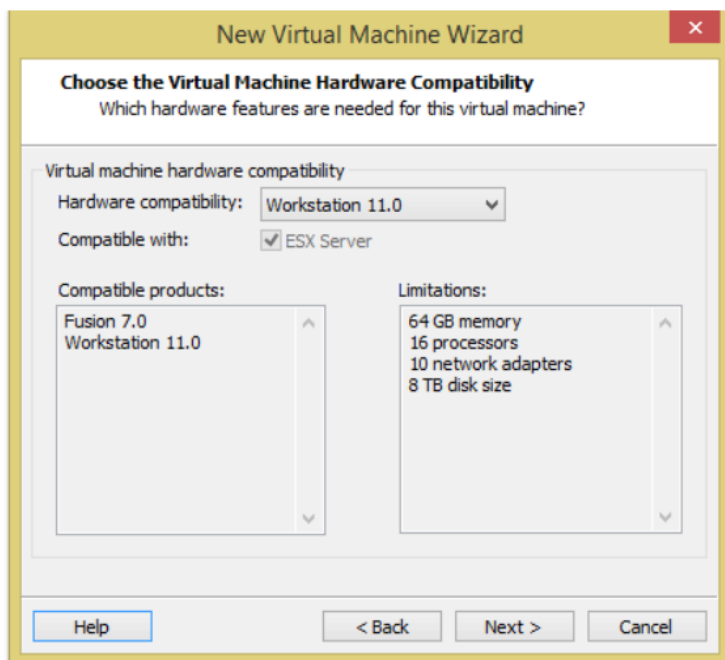
Grootte: 2 GB

Maak een aparte folder voor ISO's en product keys aan.

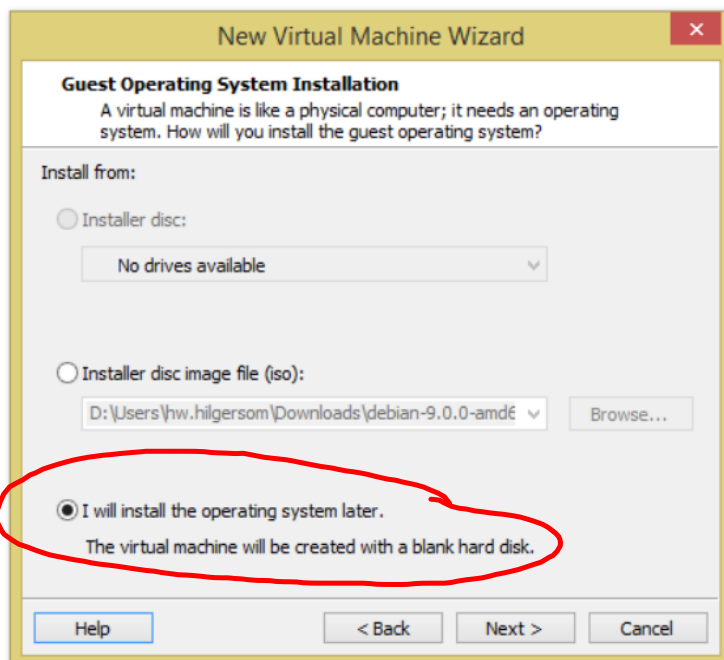




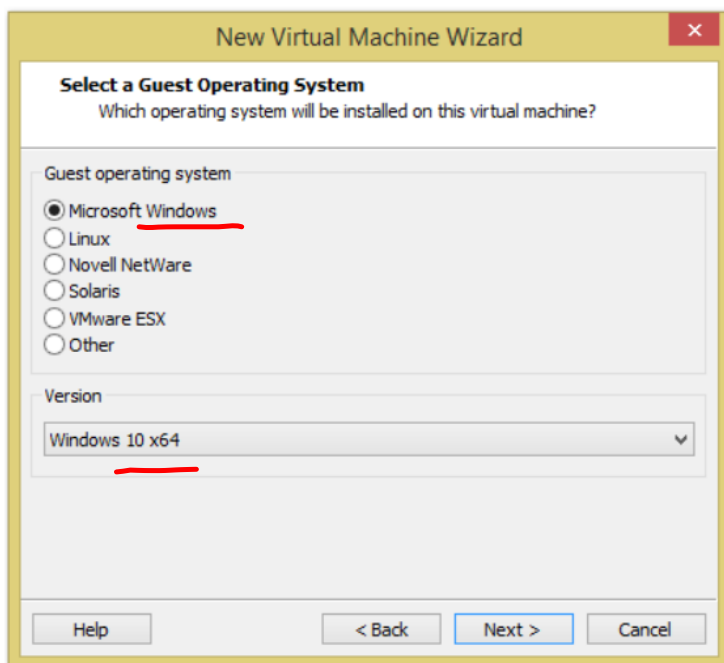




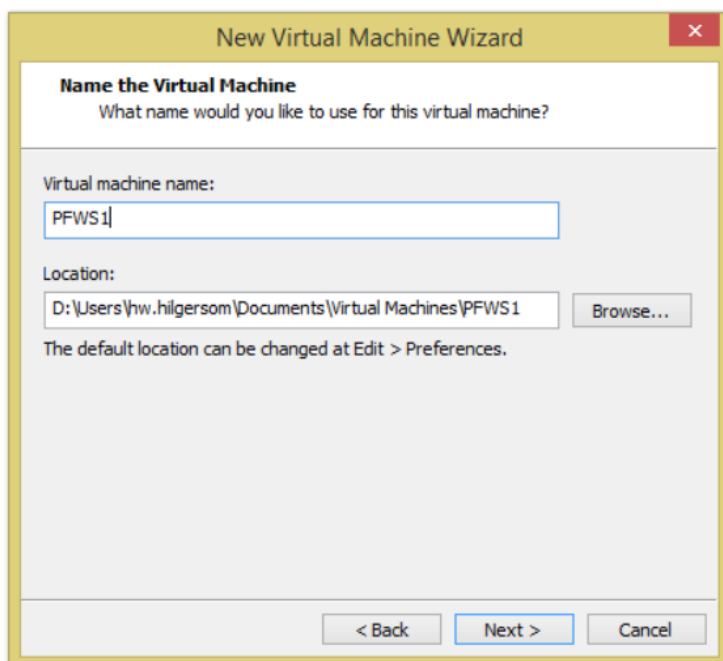
defaults



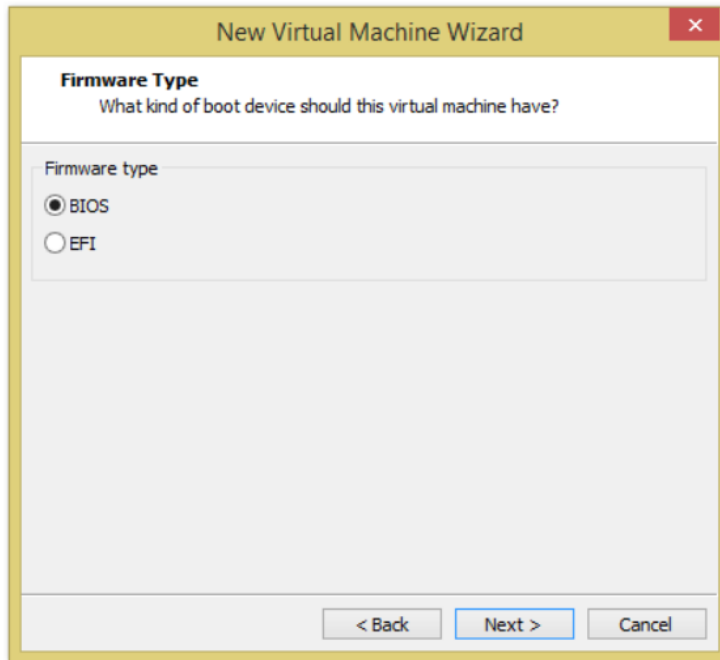
ISO komt later!



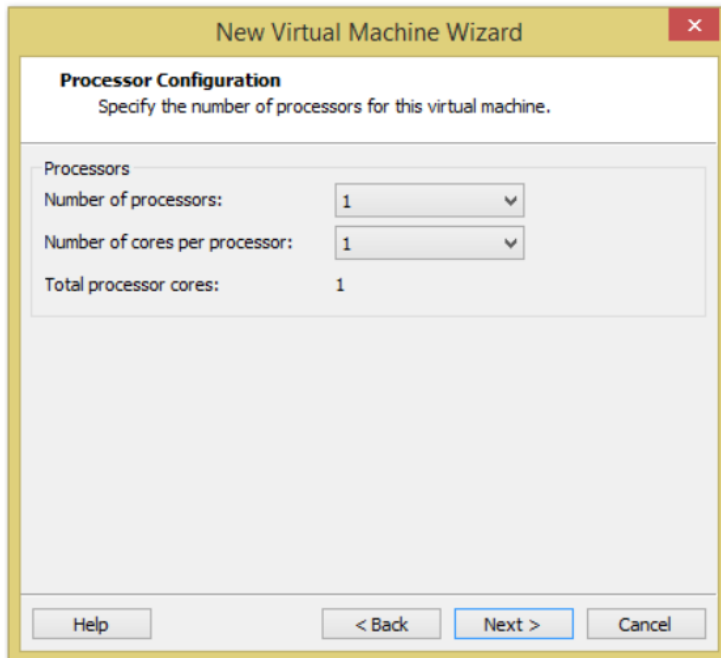
Windows 10 Pro



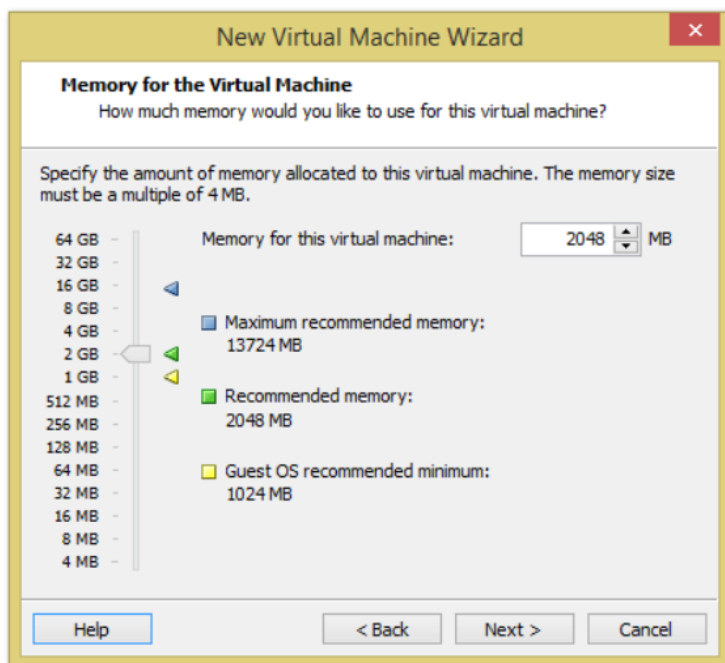
Geef de computer een naam:  
PFWS1  
Werkstation10



• BIOS

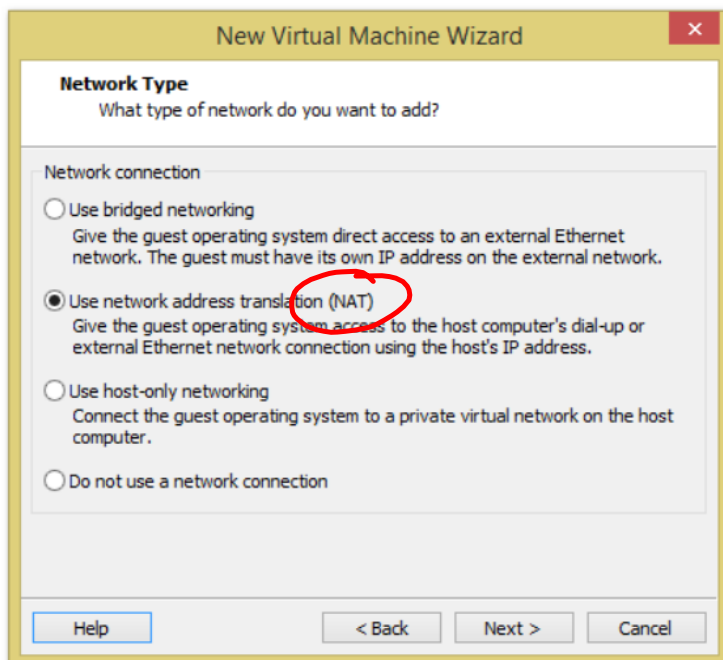


*default*

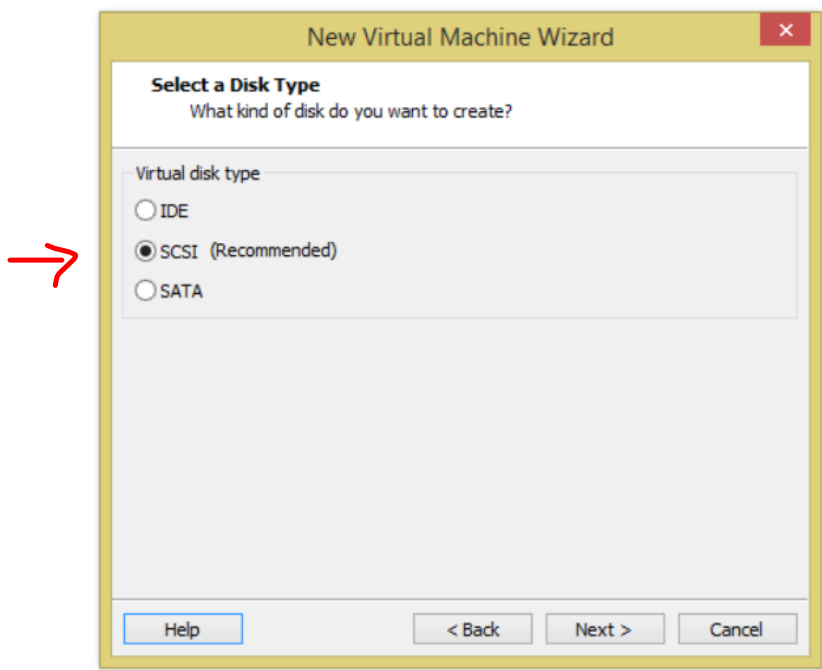


*default*

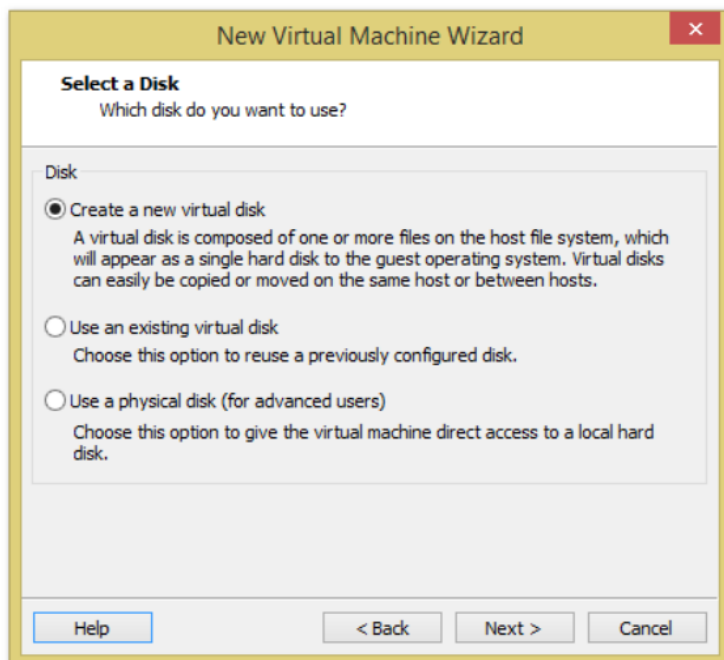




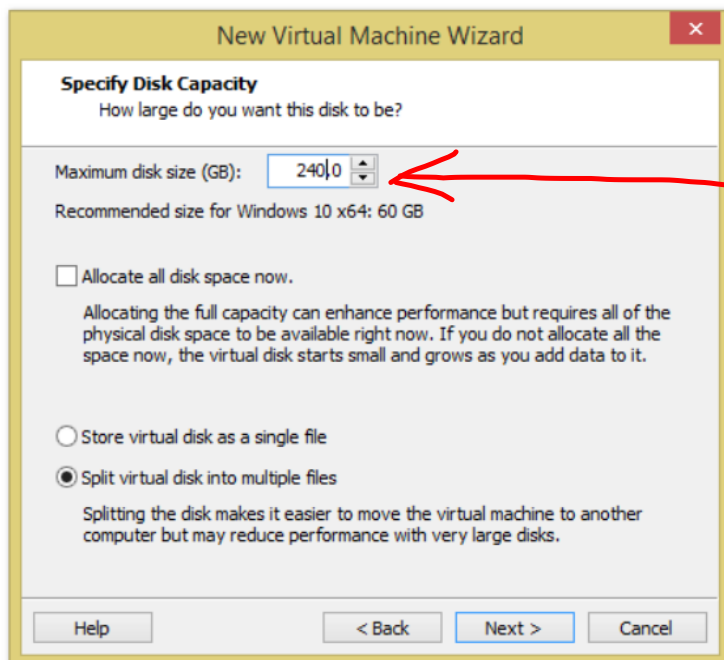
default



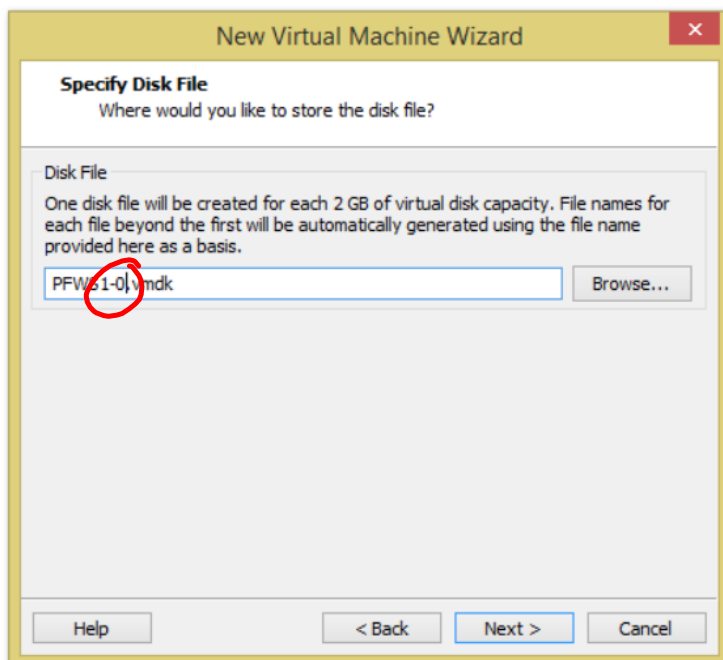
*default*



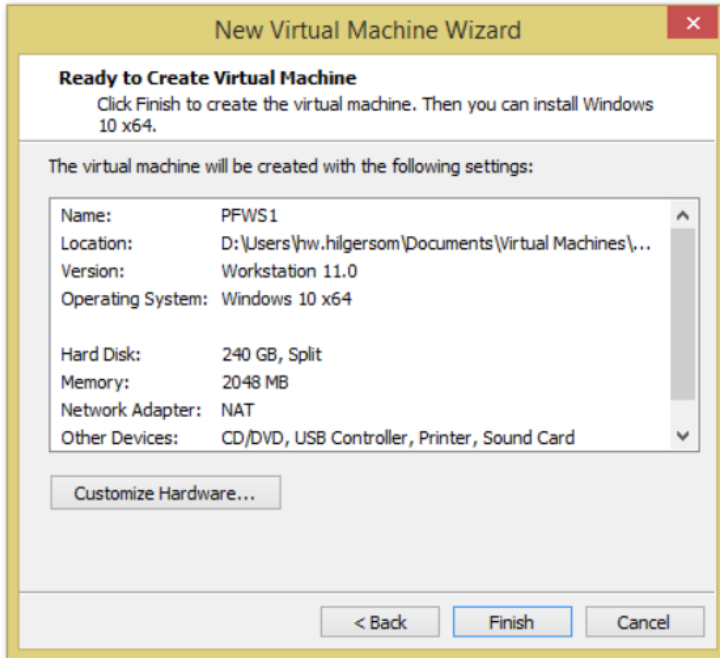
*default*



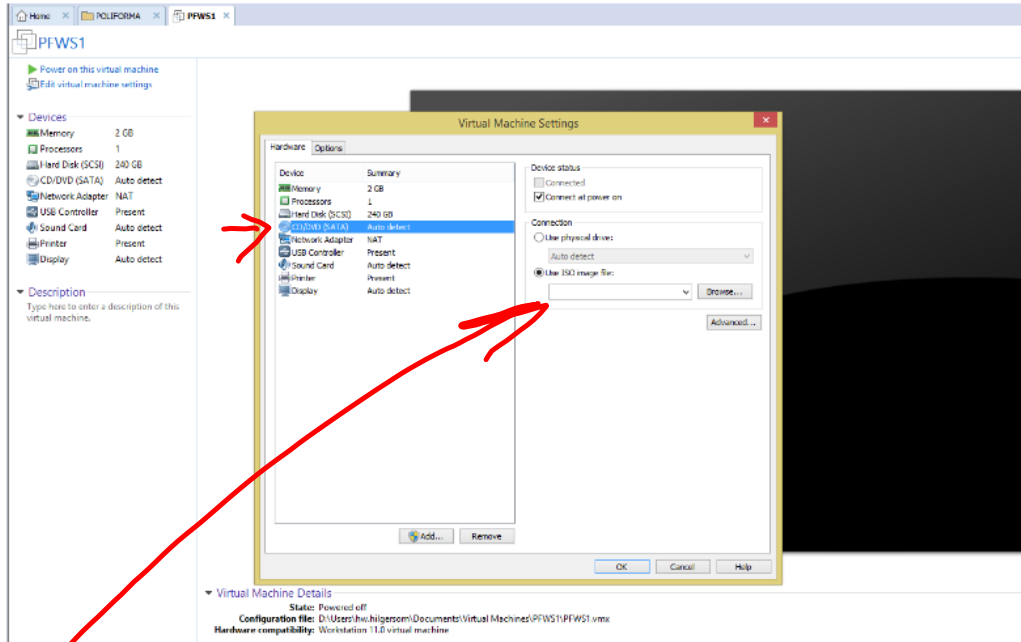
defaults !!!  
... .



— 0 = Disk 0  
— 1 = Disk 1



# Edit virtual machine

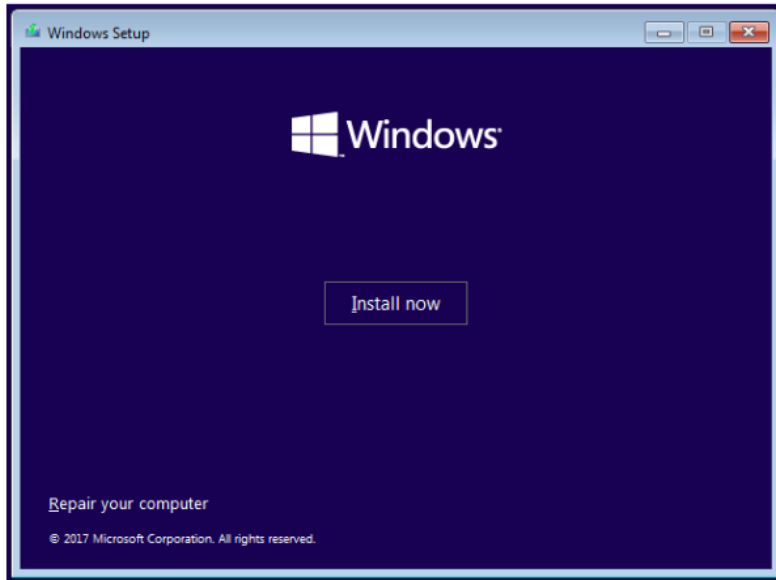


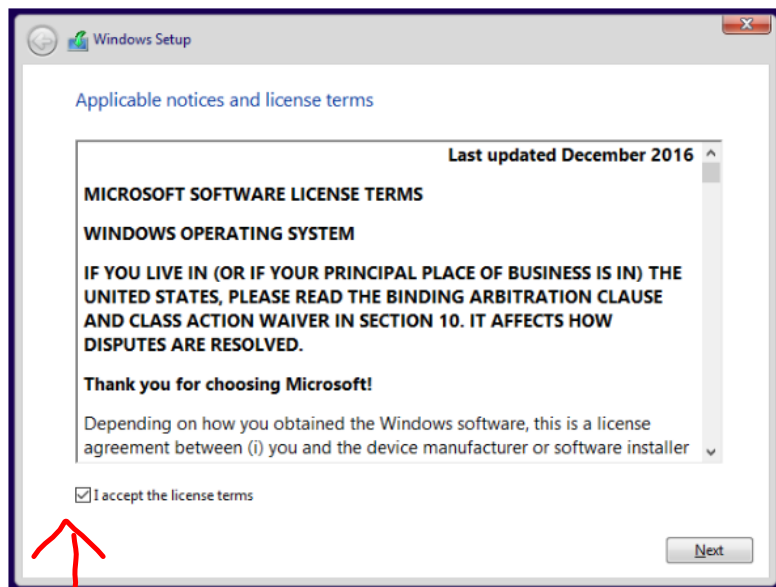
Downloads VMware ISOs

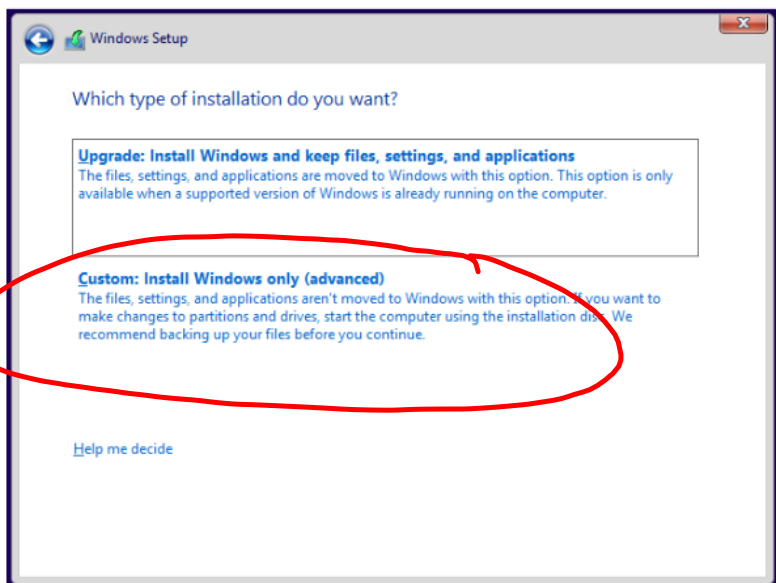


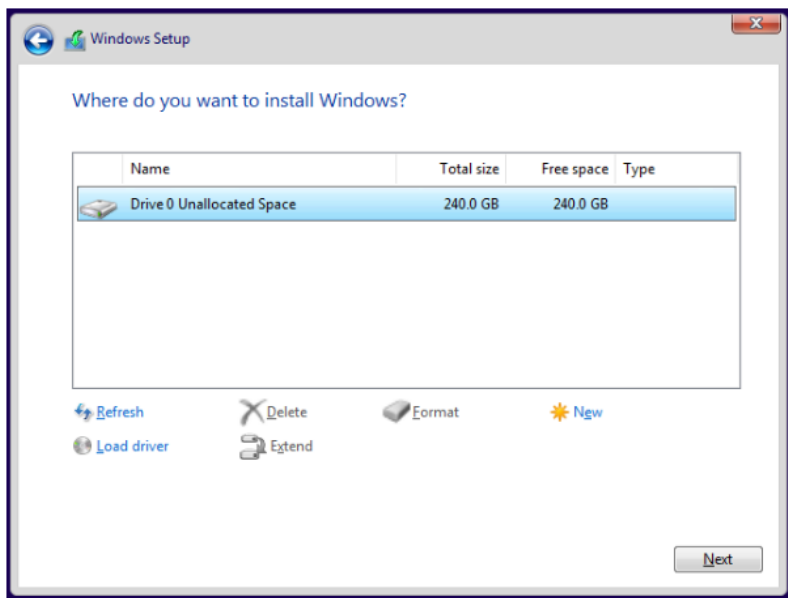
ENG  
NED  
US

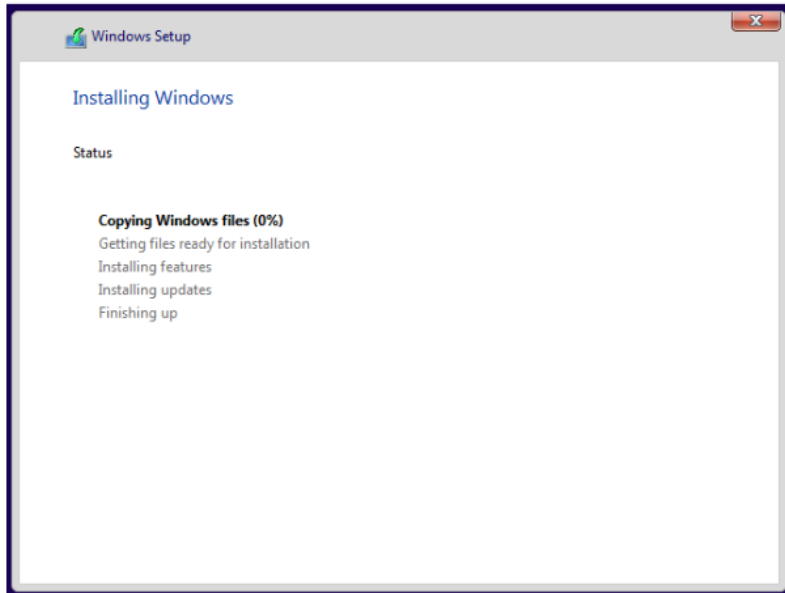


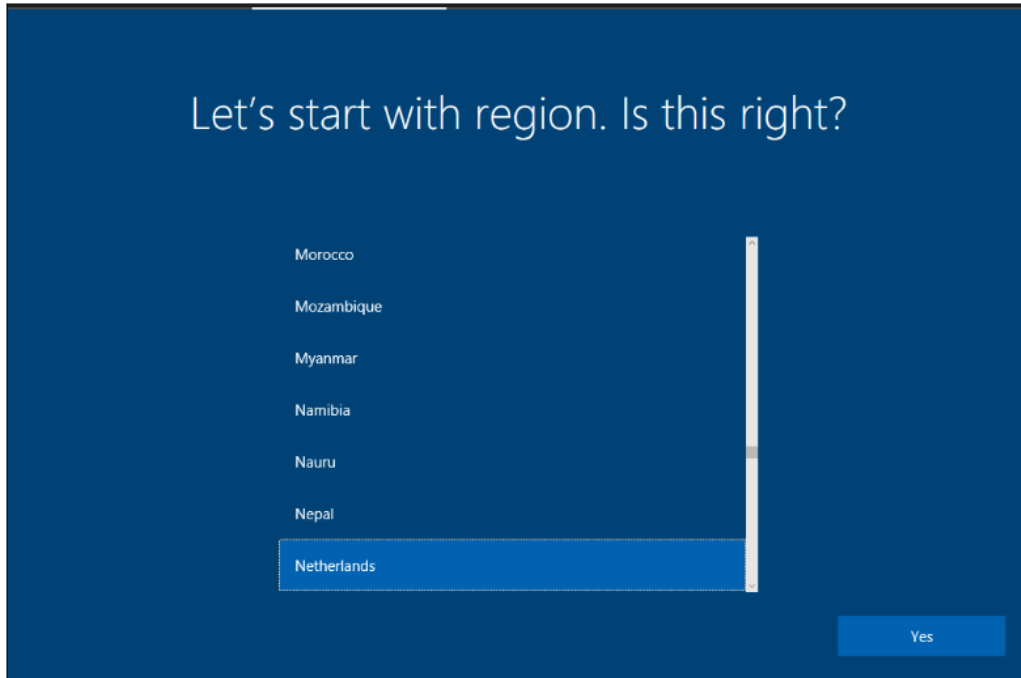


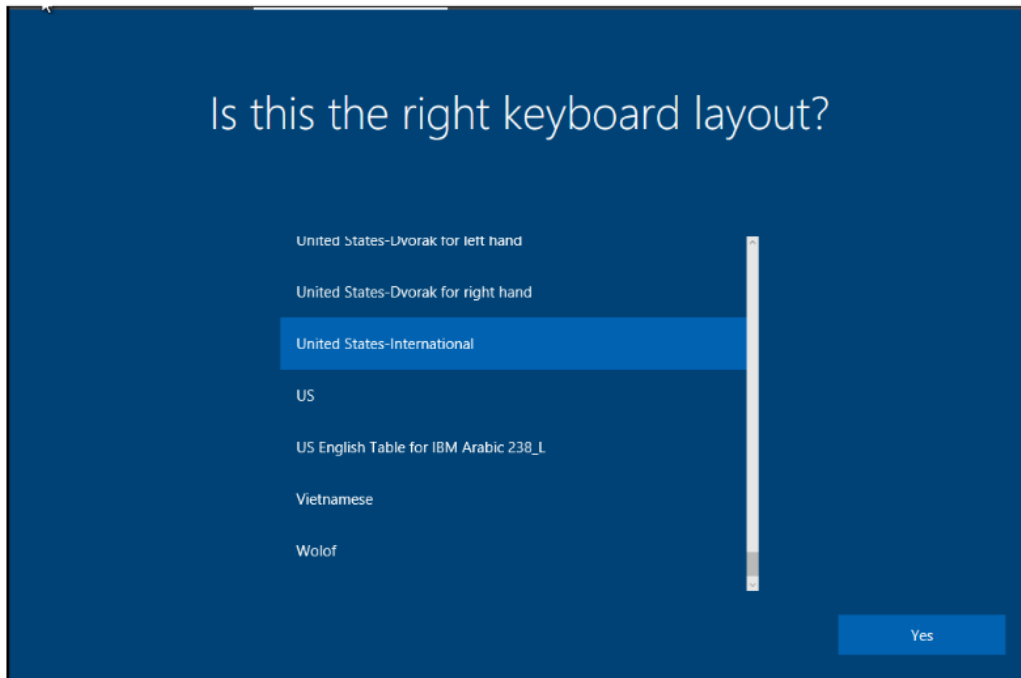












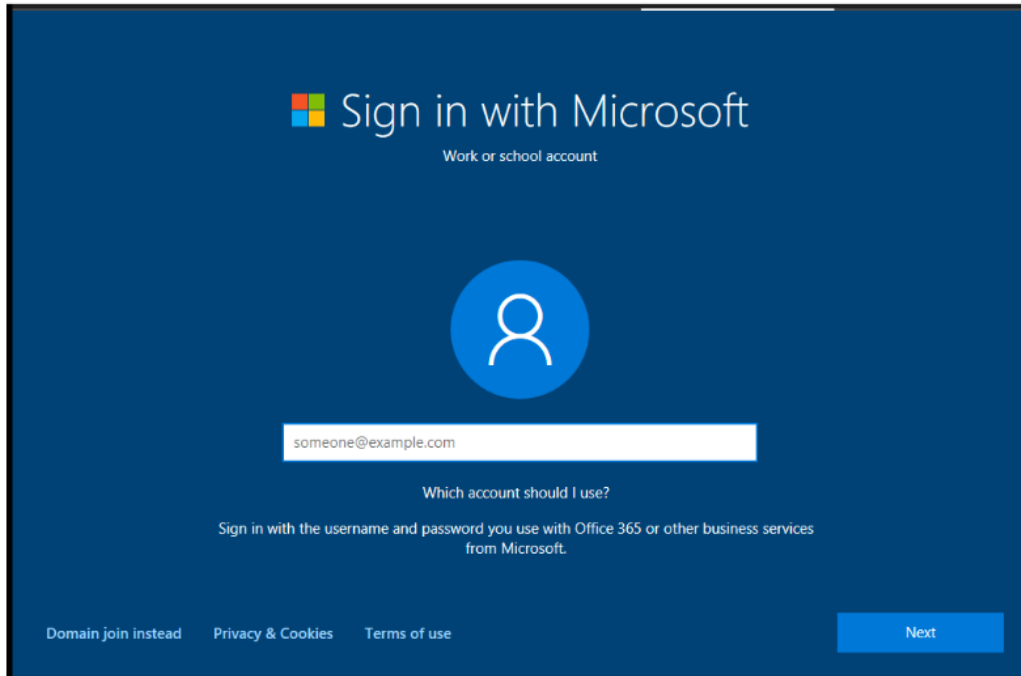
Want to add a second keyboard layout?



Add layout

Skip





Domain-joined  
Geen microsoft account!

## Choose privacy settings for your device

Microsoft puts you in control of your privacy. Choose your settings, then select 'Accept' to save them. You can change these settings at any time.

### Location

Get location-based experiences like local weather and directions to your favorite places. Let Windows & apps request your location, and send Microsoft location data to help improve location services.

On

### Diagnostics

Help us fix things and improve Microsoft products and services. Send diagnostic data (including browser, app & feature usage, and inking & typing data) to Microsoft.

Full

### Relevant Ads

Let apps use advertising ID to make ads more interesting to you based on your app usage.

On

### Speech recognition

Talk to Cortana and Store apps that support voice recognition. Send Microsoft your voice input to help improve speech services.

On

### Tailored experiences with diagnostic data

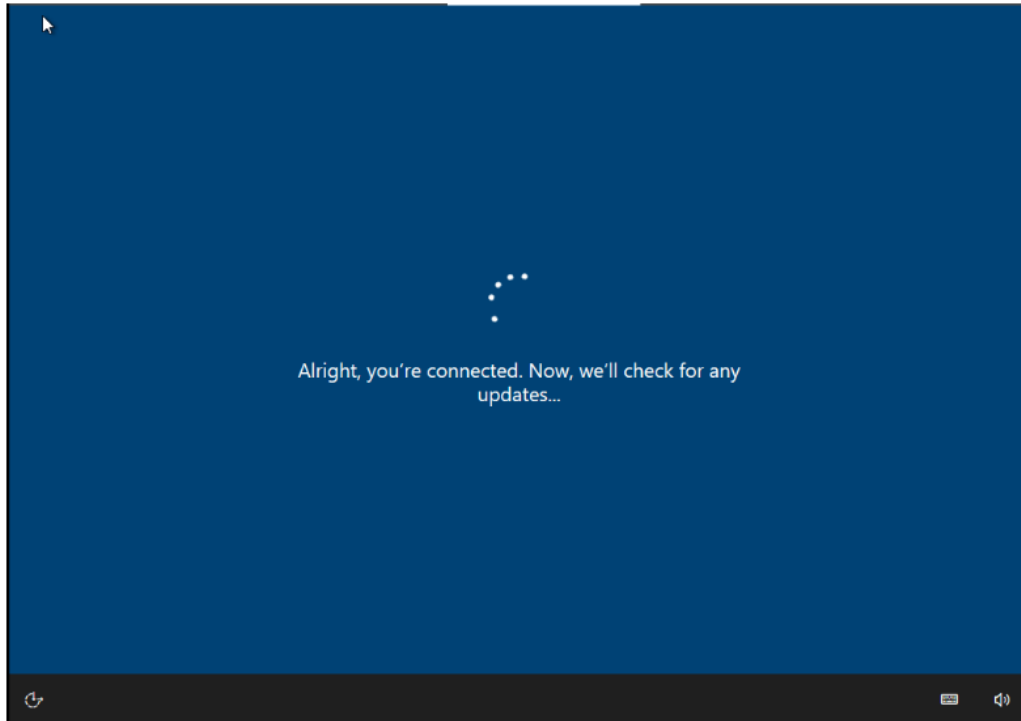
Get more relevant tips and recommendations to tailor Microsoft products and services for your needs. Let Microsoft use your diagnostic data to make this work.

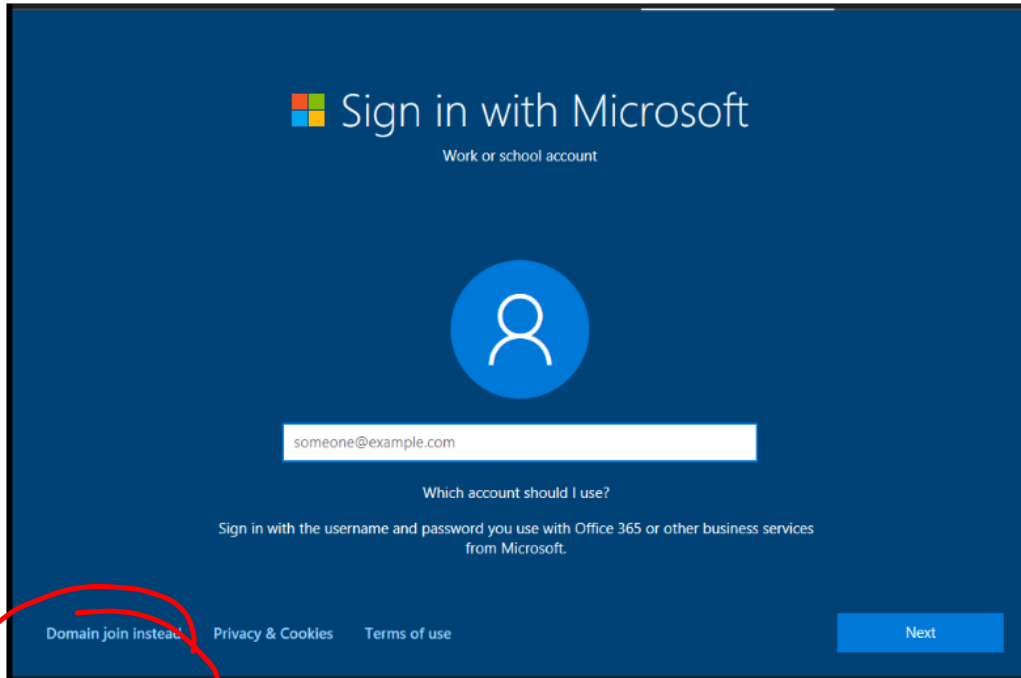
On

Select 'Learn more' for info on the above settings, how Windows Defender SmartScreen works, and the related data transfers and uses.

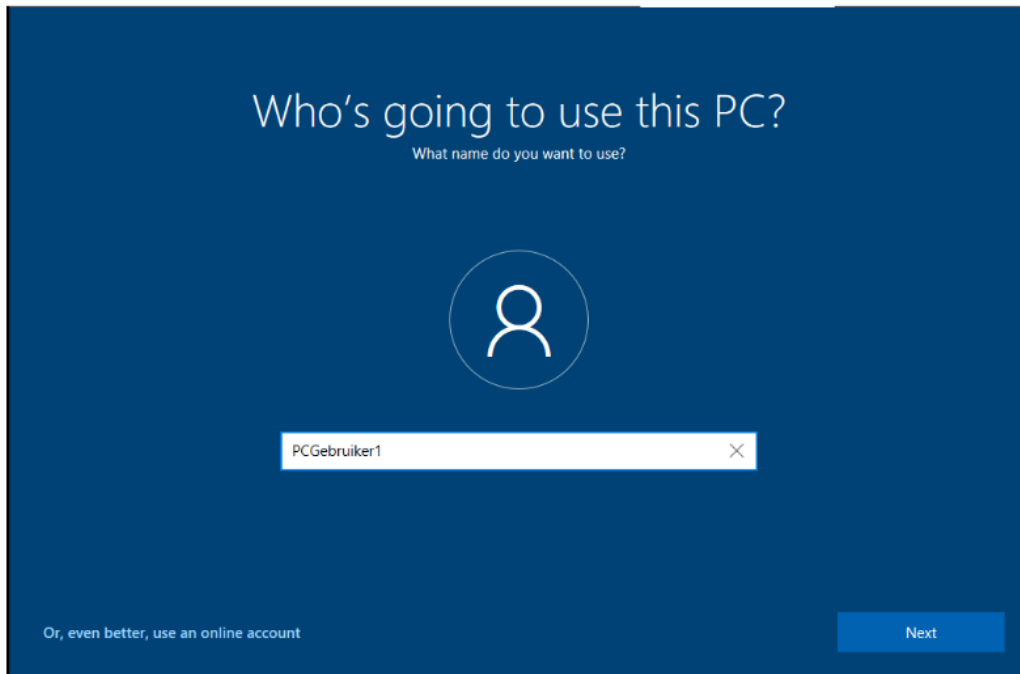
[Learn more](#)

[Accept](#)



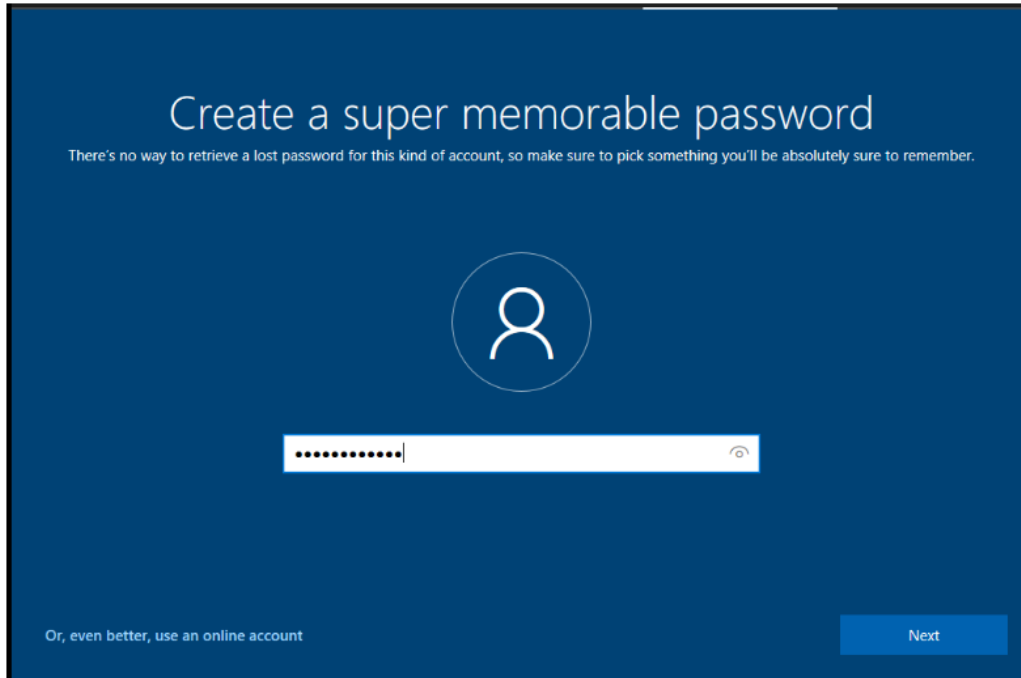


user name!



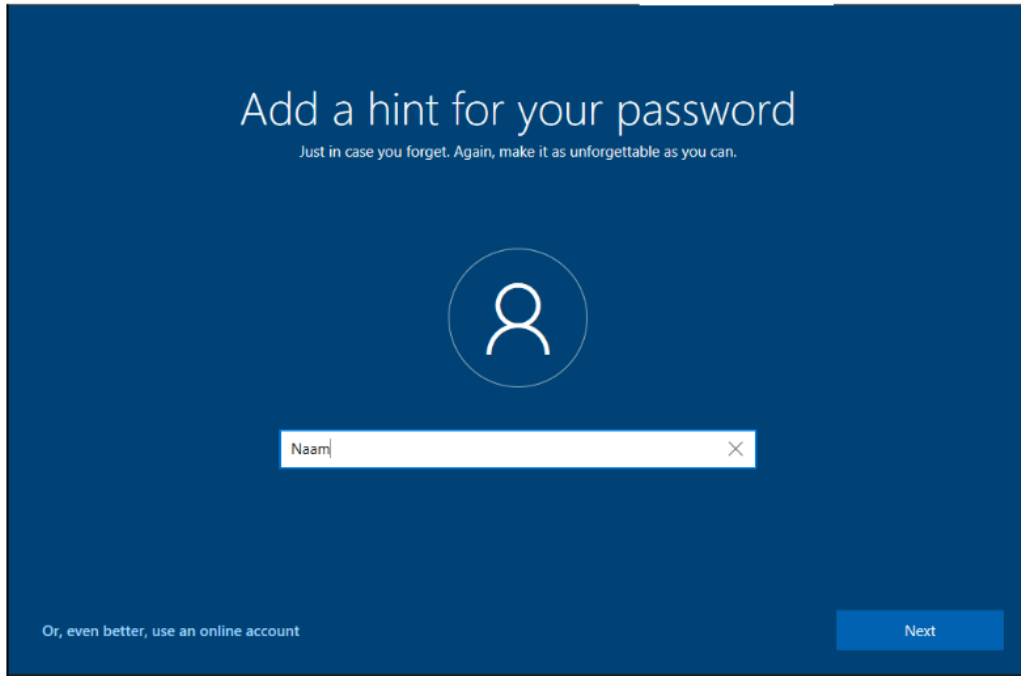
PCGebruiker1

password



1 PC Gebruiker

Hint



Naam

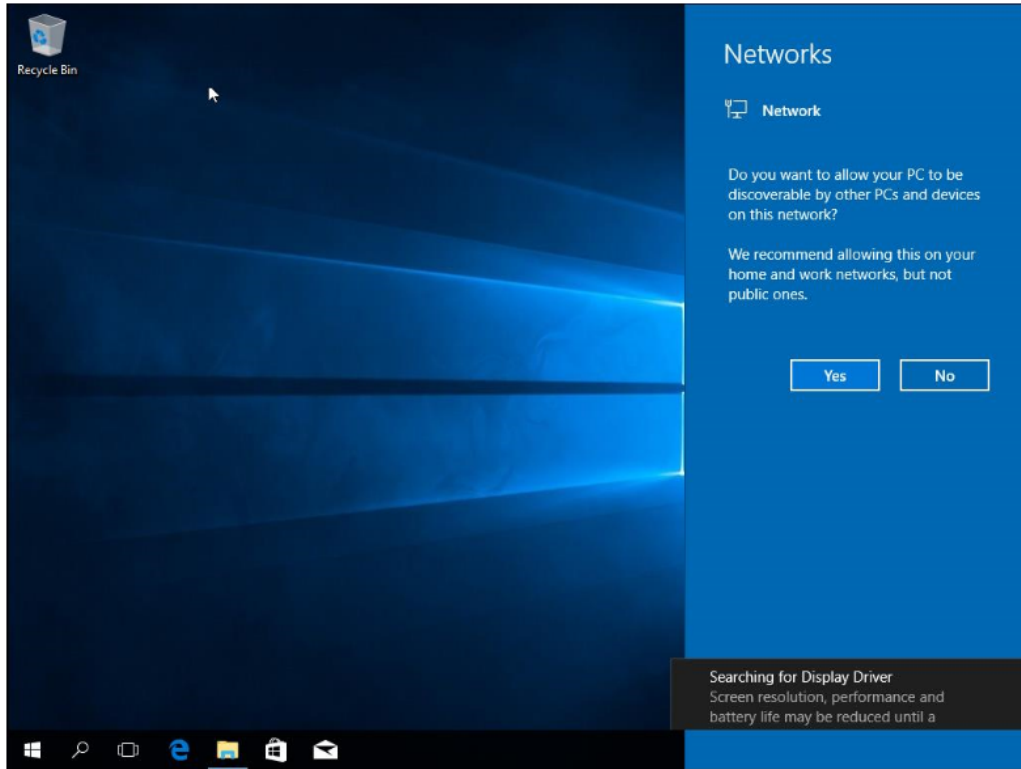
## Choose privacy settings for your device

Microsoft puts you in control of your privacy. Choose your settings, then select 'Accept' to save them. You can change these settings at any time.

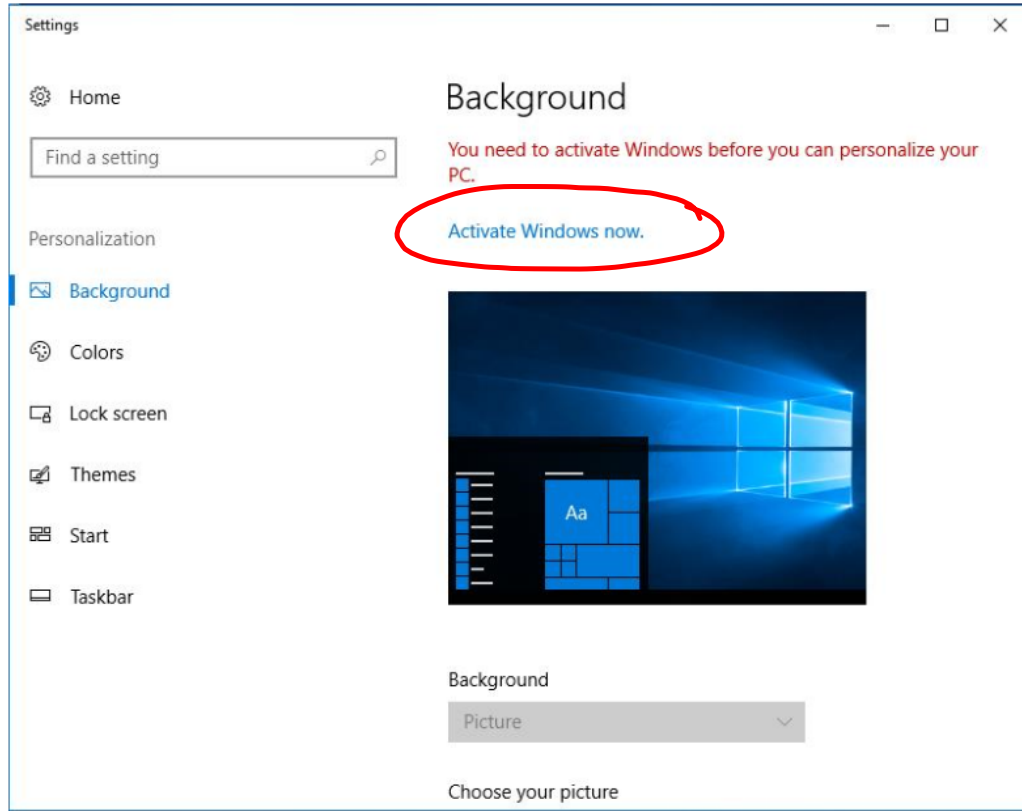
<p><b>Location</b> Get location-based experiences like local weather and directions to your favorite places. Let Windows &amp; apps request your location, and send Microsoft location data to help improve location services.</p> <p><input checked="" type="checkbox"/> On</p>	<p><b>Speech recognition</b> Talk to Cortana and Store apps that support voice recognition. Send Microsoft your voice input to help improve speech services.</p> <p><input checked="" type="checkbox"/> On</p>
<p><b>Diagnostics</b> Help us fix things and improve Microsoft products and services. Send diagnostic data (including browser, app &amp; feature usage, and inking &amp; typing data) to Microsoft.</p> <p><input checked="" type="checkbox"/> Full</p>	<p><b>Tailored experiences with diagnostic data</b> Get more relevant tips and recommendations to tailor Microsoft products and services for your needs. Let Microsoft use your diagnostic data to make this work.</p> <p><input checked="" type="checkbox"/> On</p>
<p><b>Relevant Ads</b> Let apps use advertising ID to make ads more interesting to you based on your app usage.</p> <p><input checked="" type="checkbox"/> On</p>	<p>Select 'Learn more' for info on the above settings, how Windows Defender SmartScreen works, and the related data transfers and uses.</p>

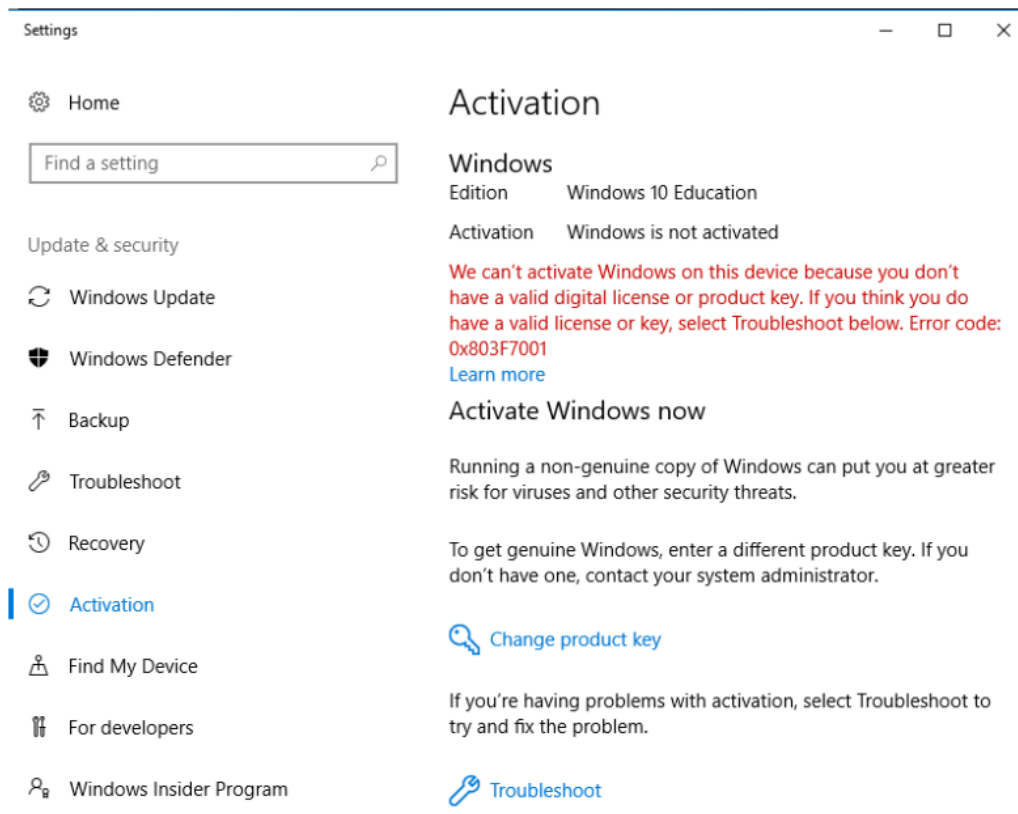
[Learn more](#) [Accept](#)

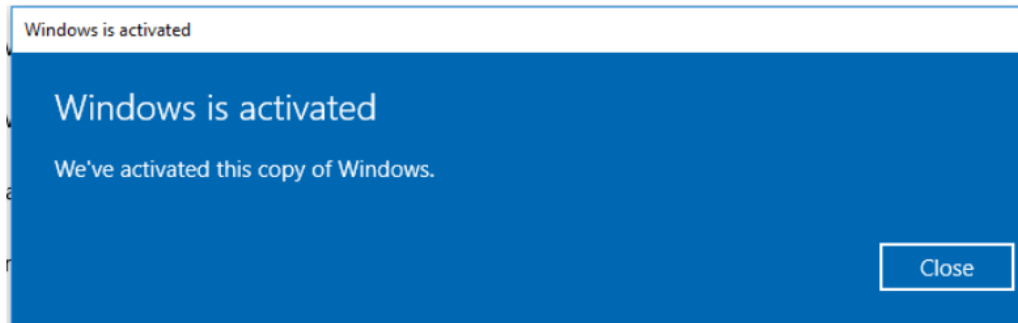
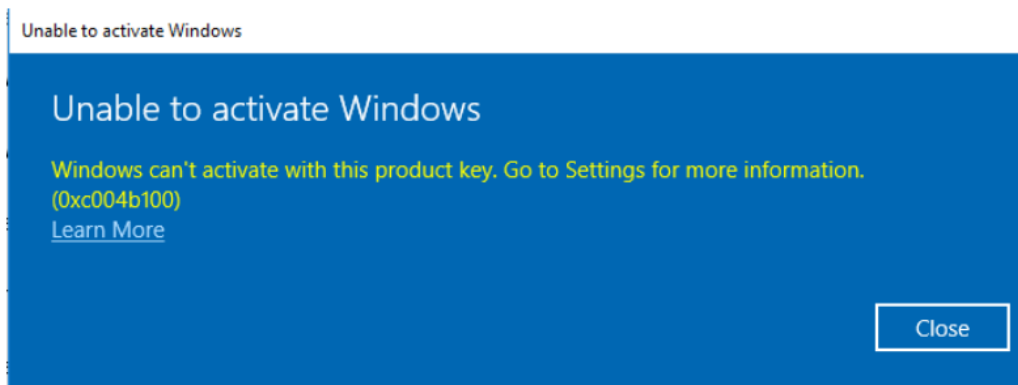




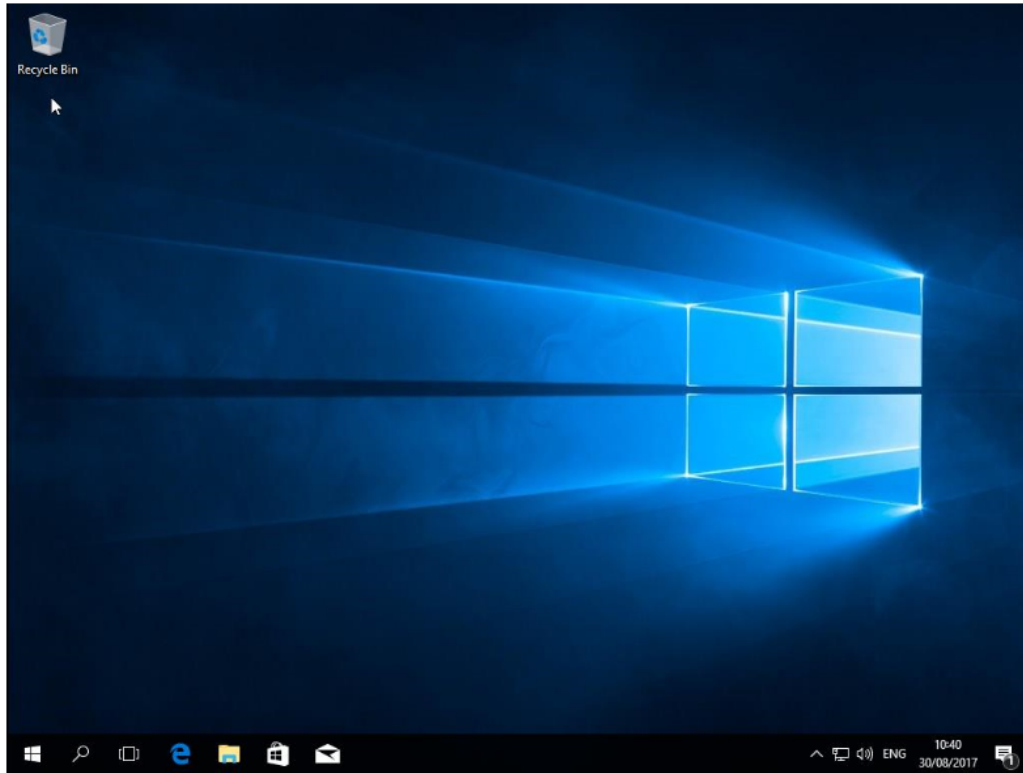
Yes!

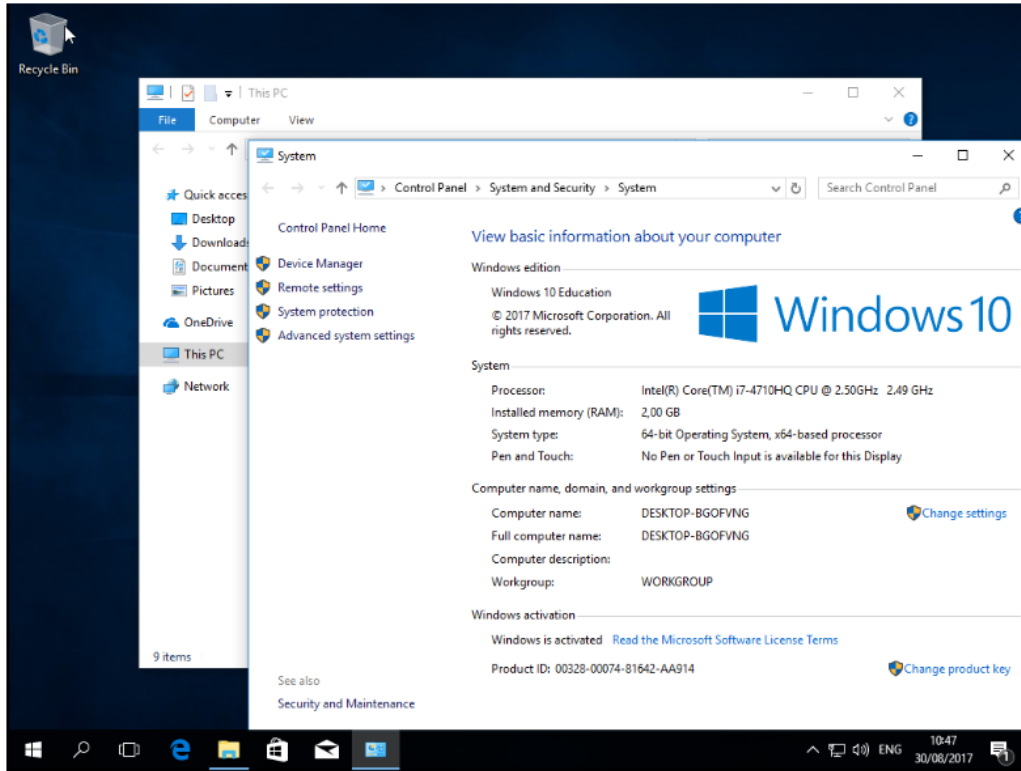


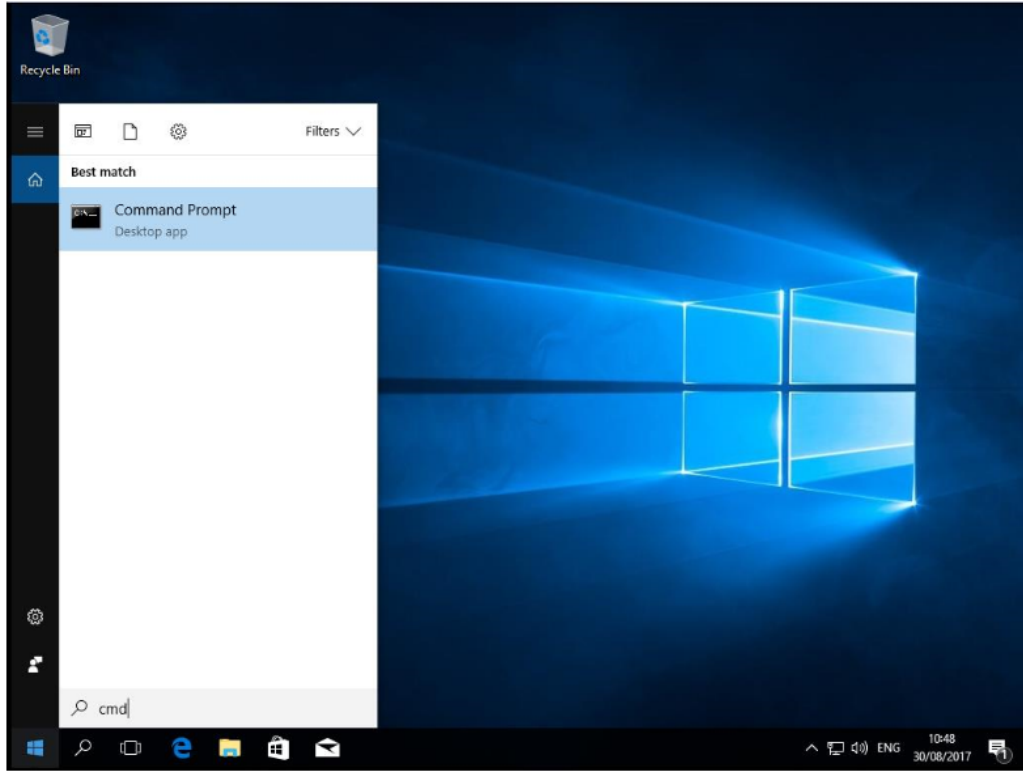




is activated







```
Command Prompt
Microsoft Windows [Version 10.0.15063]
(c) 2017 Microsoft Corporation. All rights reserved.

C:\Users\hw.hilgerson>ipconfig /all

Windows IP Configuration

Host Name . . . . . : DESKTOP-BGOFVNG
Primary Dns Suffix . . . . . :
Node Type . . . . . : Hybrid
IP Routing Enabled. . . . . : No
WINS Proxy Enabled. . . . . : No
DNS Suffix Search List. . . . . : localdomain

Ethernet adapter Ethernet0:

Connection-specific DNS Suffix . : localdomain
Description . . . . . : Intel(R) 82574L Gigabit Network Connection
Physical Address. . . . . : 00-0C-29-4E-13-7A
DHCP Enabled. . . . . : Yes
Autoconfiguration Enabled . . . . : Yes
Link-local IPv6 Address . . . . . : fe80::748f:1d89:2e1e:da1b%2(Preferred)
IPv4 Address. . . . . : 192.168.20.131(Preferred)
Subnet Mask . . . . . : 255.255.255.0
Lease Obtained. . . . . : Wednesday, 30 August 2017 10:13:24
Lease Expires . . . . . : Wednesday, 30 August 2017 11:15:01
Default Gateway . . . . . : 192.168.20.2
DHCP Server . . . . . : 192.168.20.254
DHCPv6 IAID . . . . . : 33557545
DHCPv6 Client DUID. . . . . : 00-01-00-01-21-38-2A-24-00-0C-29-4E-13-7A
DNS Servers . . . . . : 192.168.20.2
Primary WINS Server . . . . . : 192.168.20.2
NetBIOS over Tcpip. . . . . : Enabled
```



